



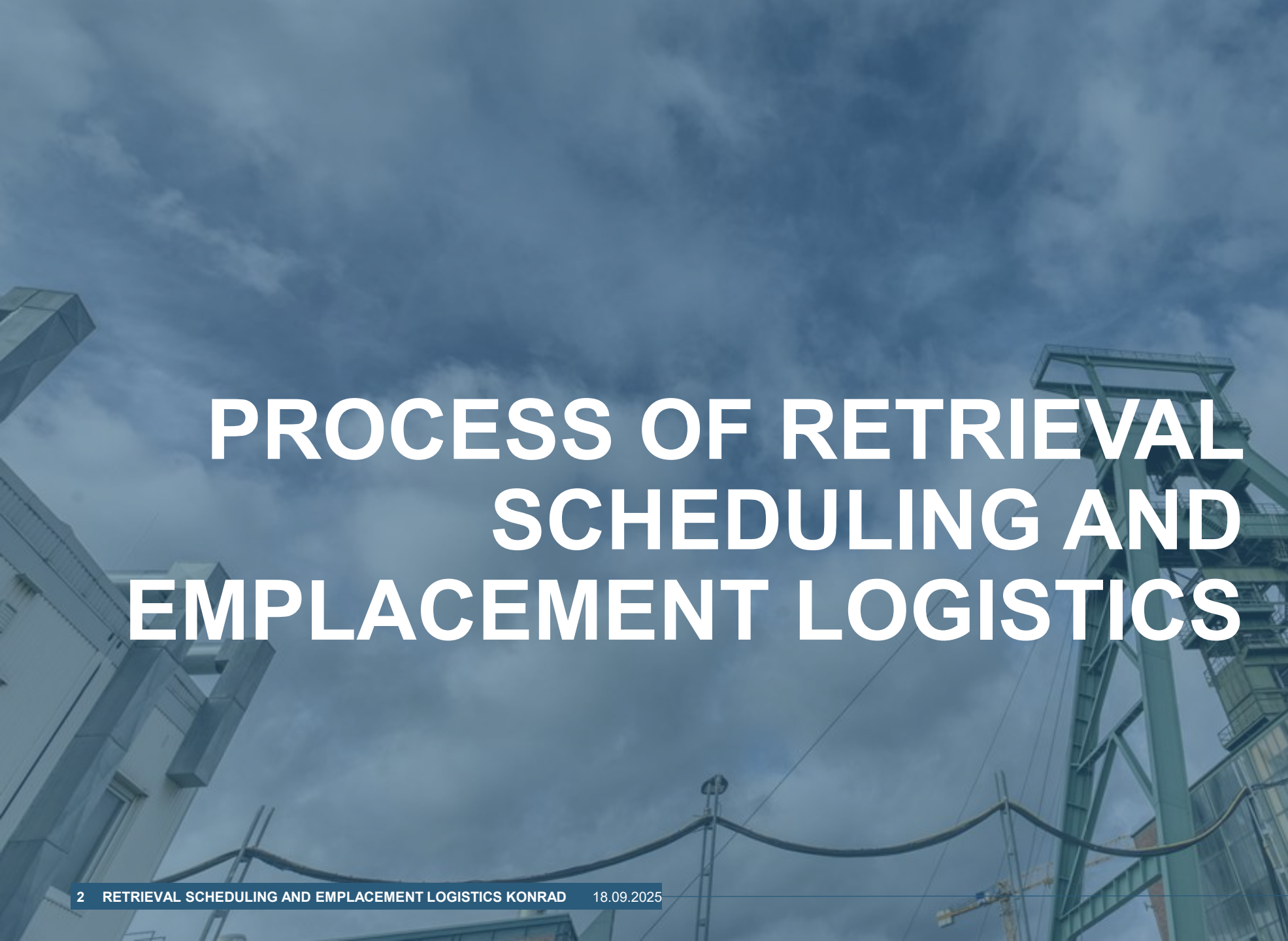
BUNDESGESELLSCHAFT
FÜR ENDLAGERUNG

RETRIEVAL SCHEDULING AND EMPLACEMENT LOGISTICS OF THE KONRAD REPOSITORY

KONTEC DIREKT

(BGE, KON-GN.2)

KONTEC 2025, Short presentation #156, 18.09.2025



PROCESS OF RETRIEVAL SCHEDULING AND EMPLACEMENT LOGISTICS

1

PROCESS OF RETRIEVAL SCHEDULING AND EMPLACEMENT LOGISTICS

 parties responsible for delivery and disposal (*Ablieferungspflichtige, AP*)

 BGE Konrad repository (*Endlager Konrad*)

storage management:
communication of boundary conditions of locations

consolidation and announcement of boundary conditions for Retrieval scheduling and emplacement logistics

radioactive waste registration

planning of emplacement campaign logistics

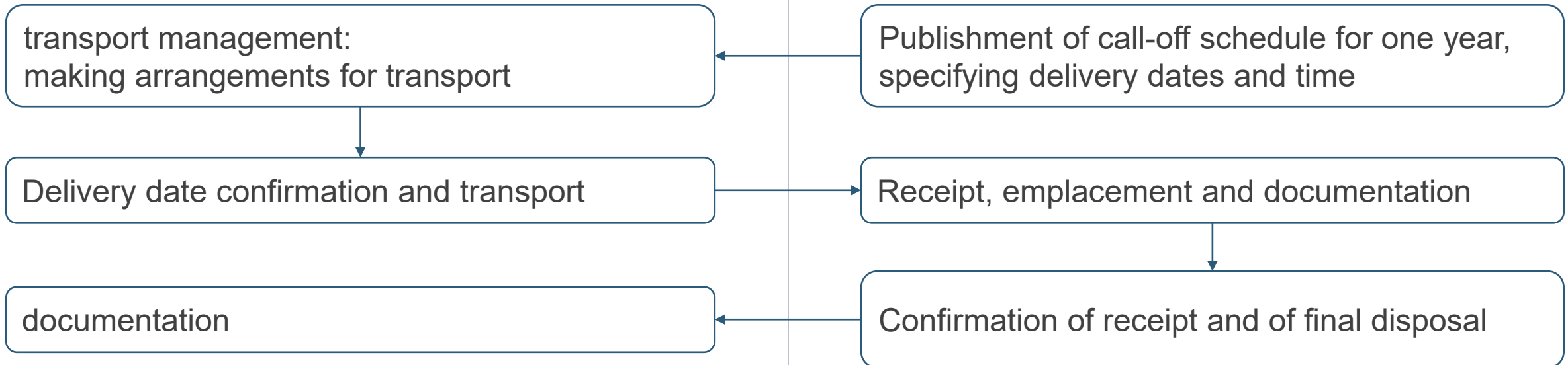
reviewing delivery schedule regarding feasibility

publication of emplacement campaign logistics

PROCESS OF RETRIEVAL SCHEDULING AND EMPLACEMENT LOGISTICS

 parties responsible for delivery and disposal (*Ablieferungspflichtige, AP*)

 BGE Konrad repository (*Endlager Konrad*)



PROCESS OF RETRIEVAL SCHEDULING AND EMPLACEMENT LOGISTICS

Ongoing tasks at BGE

- There is already close and on-going exchange between APs and BGE (technical discussions on issues relating to retrieval logistics and IT systems).
- The necessary IT systems were implemented and tested in an initial test run. Further test runs with APs are planned.
- Perspectively, BGE plans the consolidated retrieval scheduling for all parties (AP) and acts as the central contact for administrative and communication tasks.





EXECUTION OF DELIVERY SCHEDULING

2

EXECUTION OF DELIVERY SCHEDULING

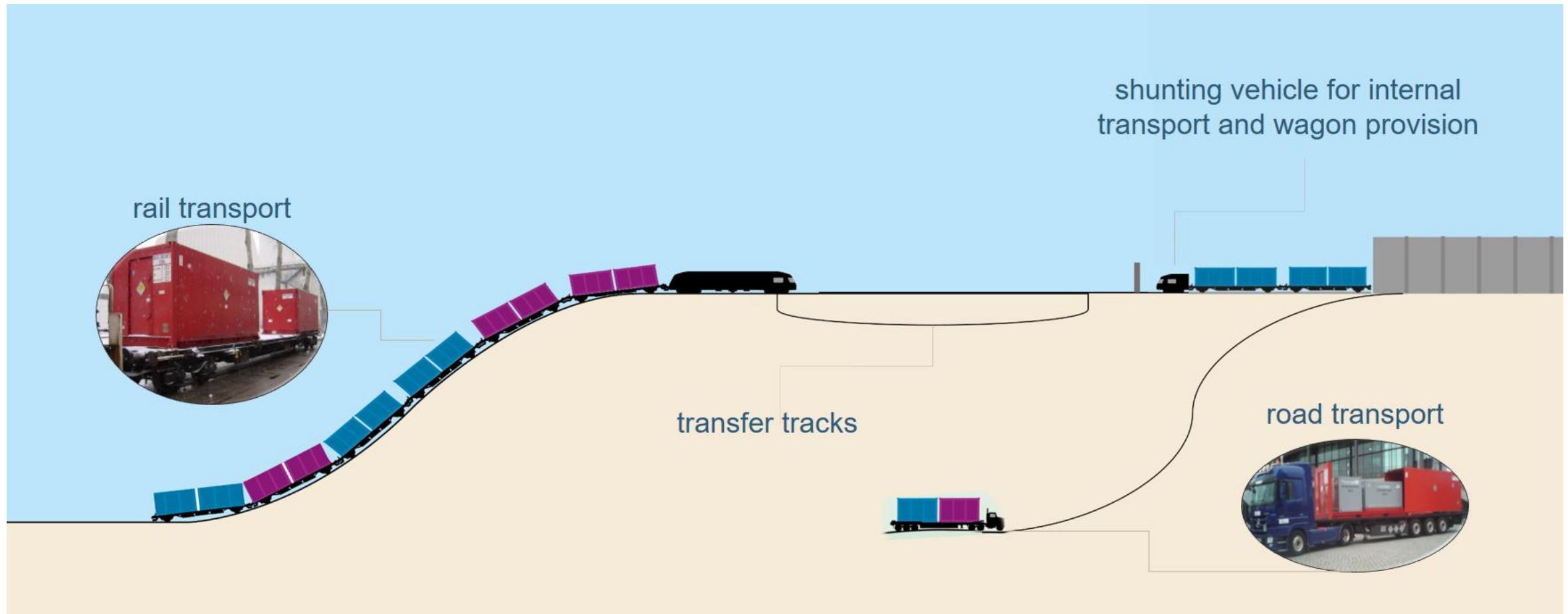


Figure 1: Deliveries of waste containers to the Konrad repository

reference: Einlicke Magazin Nr. 7

EXECUTION OF EMPLACEMENT SCHEDULING

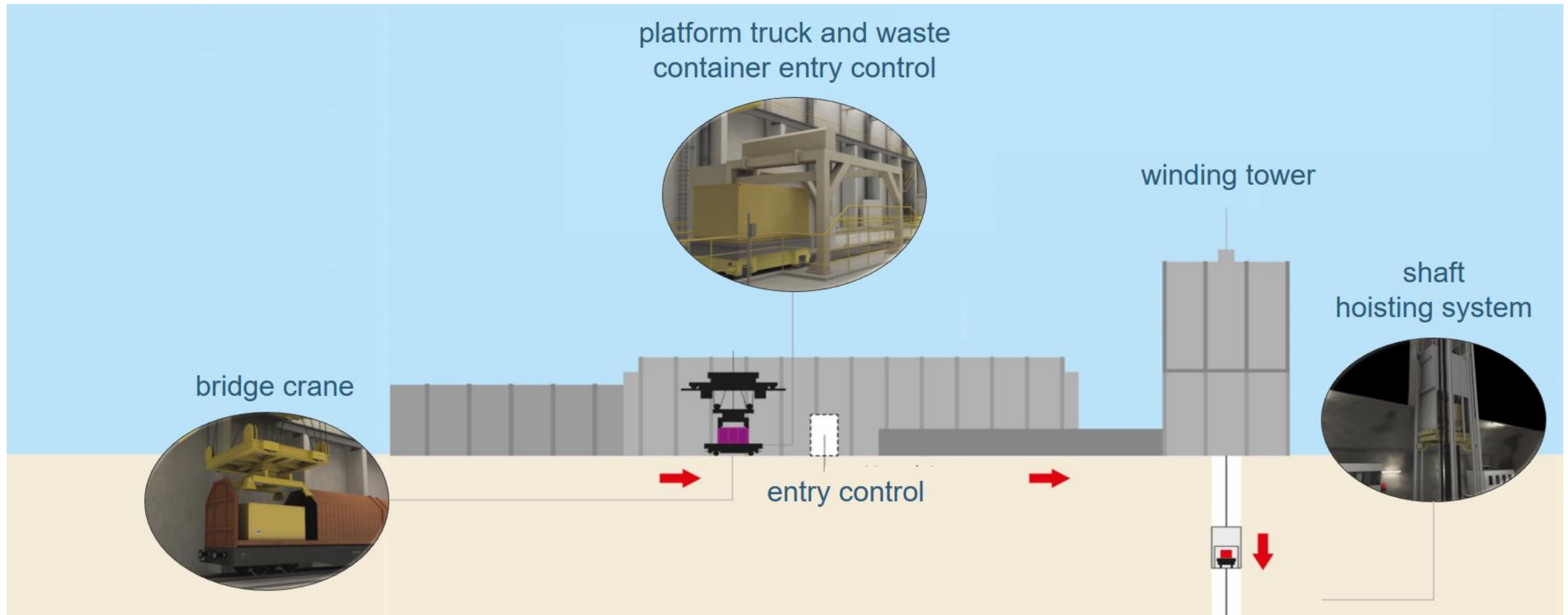


Figure 2: Konrad repository above ground

reference: Einlicke Magazin Nr. 7

EXECUTION OF EMPLACEMENT SCHEDULING

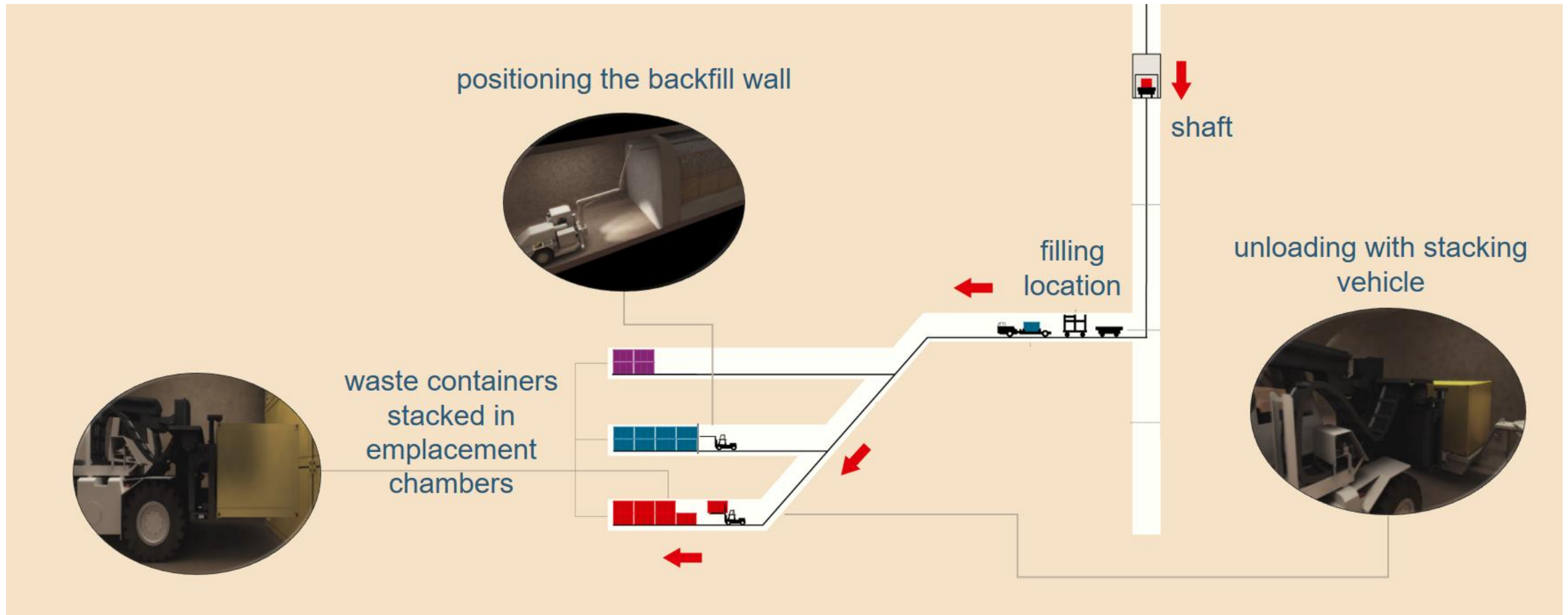


Figure 3: Konrad repository on the underground

reference: Einlicke Magazin Nr. 7

BGE IT SYSTEM PLATO

3

BGE IT SYSTEM PLATO

IT system for perspective use by AP

Platform DORA II: **PLATO**



External web access for data
and information exchange

- Web-based platform, login requires initial registration
- Required master data for initial registration:
 - Name / abbreviation according to AVOS list
 - Functionalities/permissions, e.g. location
 - Designation of a functional mailbox
 - Designation of users to be created
- Subsequent assignment to „superordinate“ organization possible

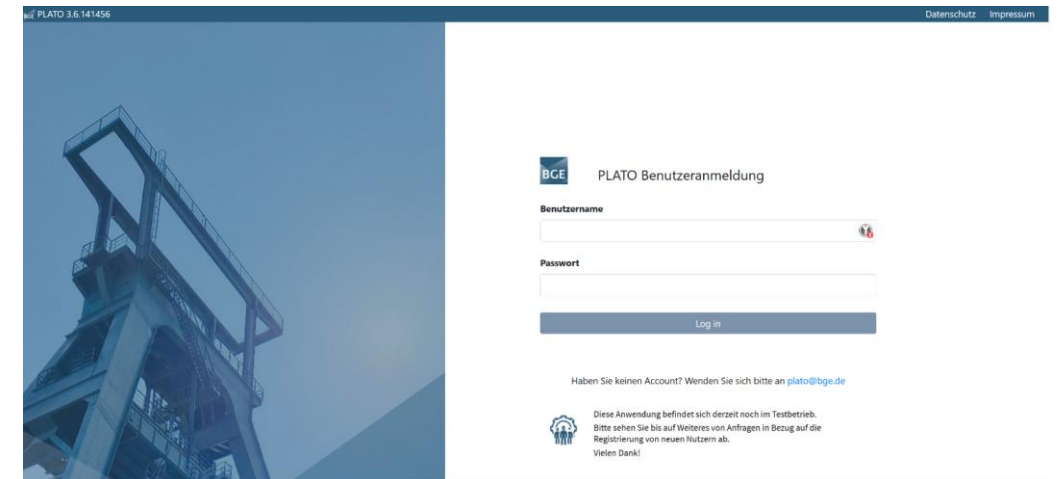


Figure 4: Login page for the DORA II platform (PLATO)

PLATO: CONVENIENT WASTE REGISTRATION

Import interface



- **Connection of own systems** via import interface possible, e.g. for large waste inventories
- Interface description by BGE currently being developed; XML will be made available to all

Alternatives



- Web-based input mask available for **manual entry**, e.g. for low waste inventory
- Import of **DORA I** data (with known XML format) and **manual completion of mandatory fields**

RETRIEVAL SCHEDULING AND EMPLACEMENT LOGISTICS OF THE KONRAD REPOSITORY

If you have any questions or suggestions, please do not hesitate to contact us.

